

Home Insert Annotate Layout Parametric View Manage Output Plug-ins Autodesk 360

Line Polyline Circle Arc

Move Rotate Trim Copy Mirror Fillet Stretch Scale Array

Layers: Unsaved Layer State, 0

Annotation: Text, Linear, Leader, Table

Block: Create, Edit, Edit Attributes

Properties: ByLayer, ByLayer, ByLayer

Groups: Group

Utilities: Measure

Clipboard: Paste

Properties

No selection

General

Color	ByLayer
Layer	0
Linetype	ByLayer
Linetype scale	1
Lineweight	ByLayer
Transparency	ByLayer
Thickness	0

Plot style

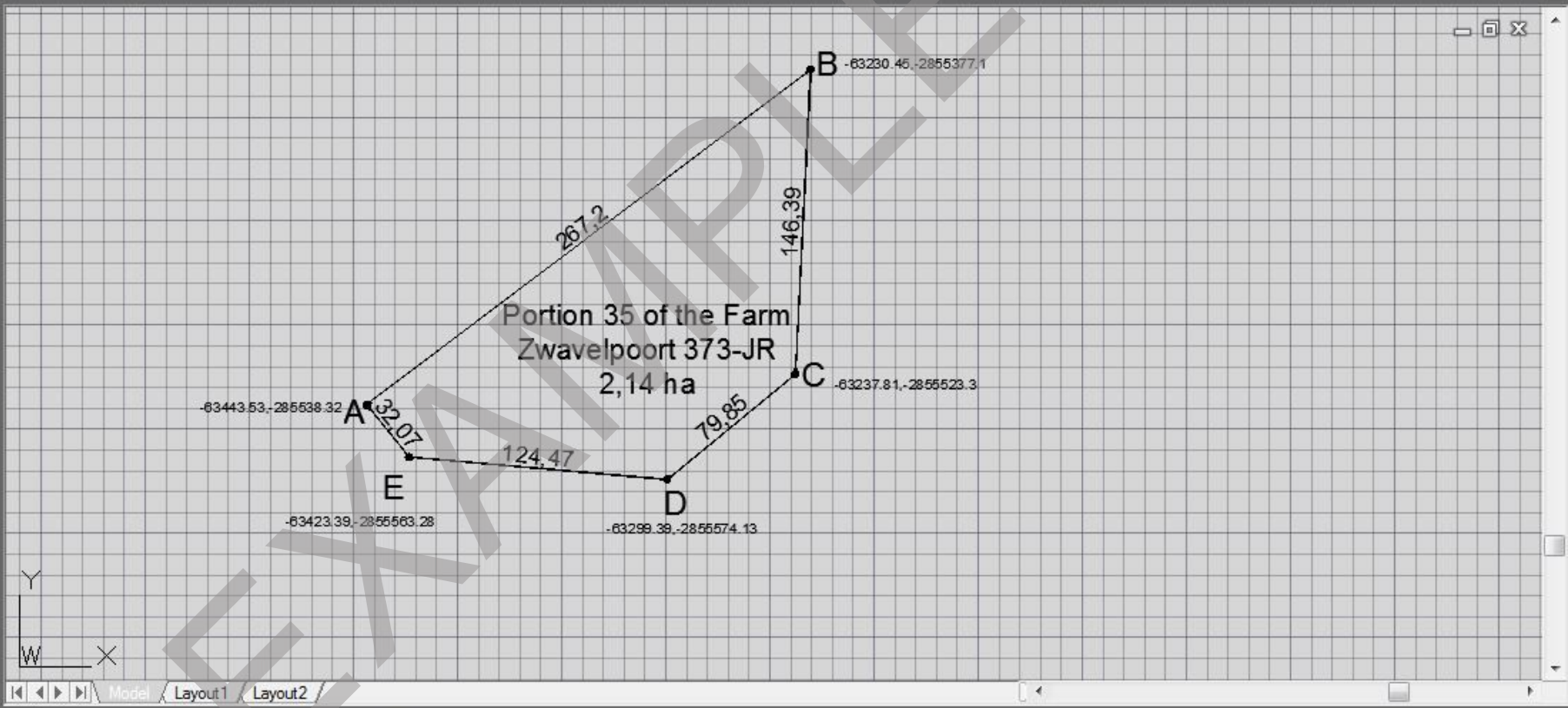
Plot style	ByColor
Plot style table	None
Plot table att...	Model
Plot table type	Not available

View

Center X	-63247.959
Center Y	-2855508.9094
Center Z	0
Height	322.634
Width	267.3253

Misc

Annotation s...	1:1
UCS icon On	Yes
UCS icon at ...	Yes
UCS per view...	No
UCS Name	



Model / Layout1 / Layout2

Specify base point or [Displacement] <Displacement>:
Specify second point or <use first point as displacement>:

Type a command